



# Thrifty *The* Stitcher

CLAIRE-LOUISE  
HARDIE

LEARN TO SEW WITH A PRO

## Make a simple cushion

You're going to make a simple cushion with an envelope back opening.

The cushion can be embellished with ribbon or other trims, and made in any size.

We're making a cushion for a 35 cm cushion pad in this example.

### Key



The darker colour represents the **right** side of the fabric. This is the fabric that is seen from the outside when the cushion is finished.



The paler colour represents the **wrong** side of the fabric, which is the side that's on the inside when the cushion is finished.

## Fabric Quantity

### Fabric required (metric):

	35 cm	40 cm	45 cm	50 cm
115 cm wide	0.4 m	0.5 m	0.9 m	0.9 m
115 cm wide with nap	0.7 m	0.8 m	0.9 m	0.9 m
150 cm wide	0.4 m	0.5 m	0.6 m	0.6 m
150 cm wide with nap	0.4 m	0.5 m	0.6 m	0.9 m

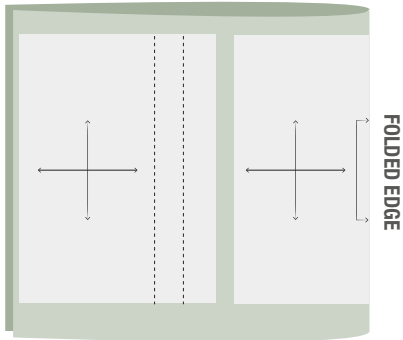
### Fabric required (imperial):

	14"	16"	18"	20"
44" wide	1/2 yd	1/2 yd	1 yd	1 yd
44" wide with nap	3/4 yd	7/8 yd	1 yd	1 yd
60" wide	1/2 yd	1/2 yd	5/8 yd	5/8 yd
60" wide with nap	1/2 yd	1/2 yd	5/8 yd	1 yd

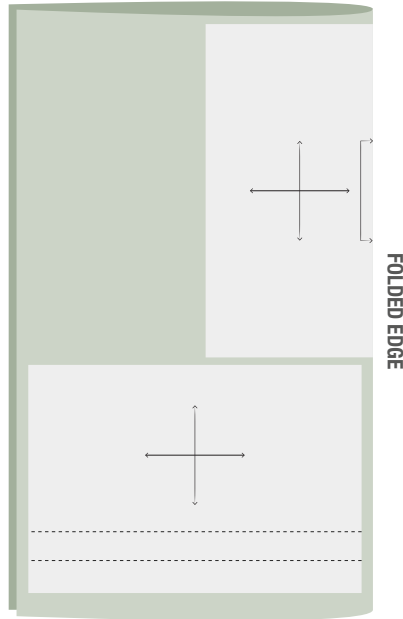
**Notions / haberdashery:** Ribbon if you want to add ribbon detail.

# Cutting Guides

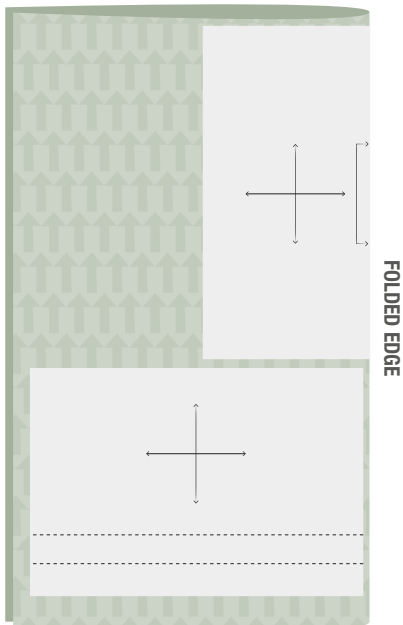
**115cm / 44" wide fabric**  
35-40cm / 14-16" cushions



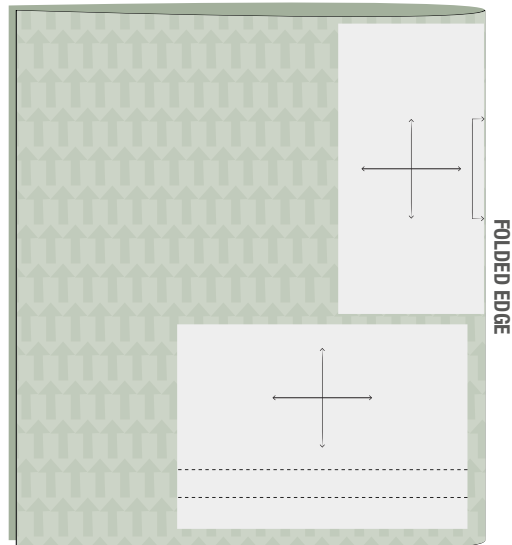
**115cm / 44" wide fabric**  
45-50cm / 18-20" cushions



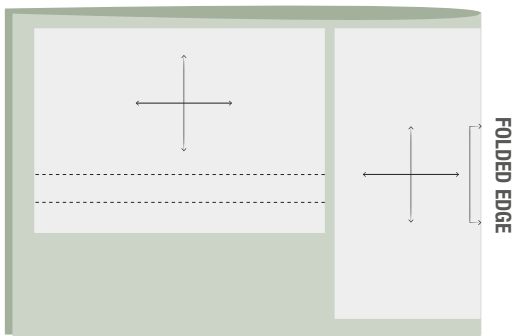
**115cm / 44" wide fabric with nap**  
35-50cm / 14-20" cushions



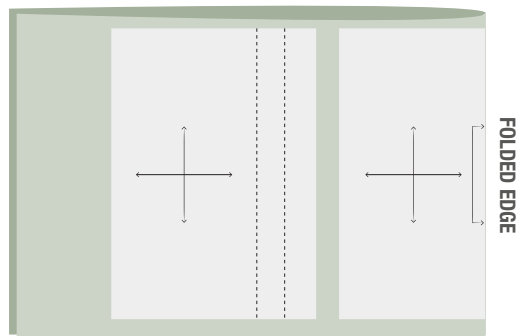
**150cm / 60" wide fabric**  
50cm / 20" cushions



**150cm / 60" wide fabric**  
35-45cm / 14-18" cushions

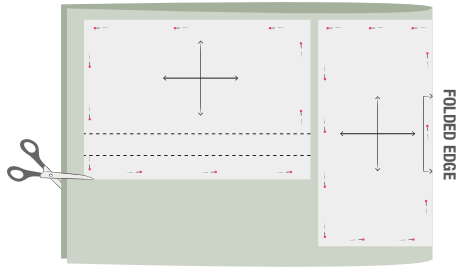


**150cm / 60" wide fabric**  
50cm / 20" cushions



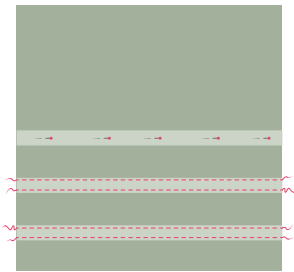
### 1 Cut out your pieces.

Pin your paper templates onto the fabric, and carefully cut around them.

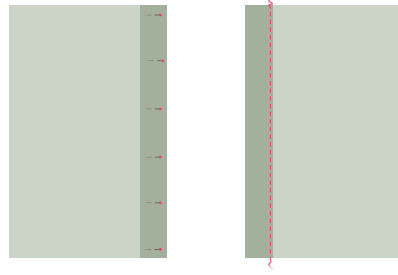


### 2 Decorate the front of your cushion.

If you wish to add any trims or ribbon embellishments to your cushion, do so to the flat cushion piece before it's seamed.

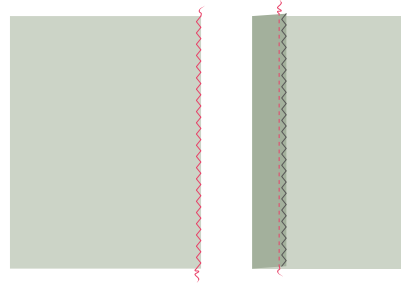


Pin in place, then machine stitch close to the folded edge.



This is called a 'double turned' hem and not suitable for thick fabrics.

For thick fabrics, zigzag the raw edge of your hem allowance and press up a 5cm hem. Pin then machine stitch in place.

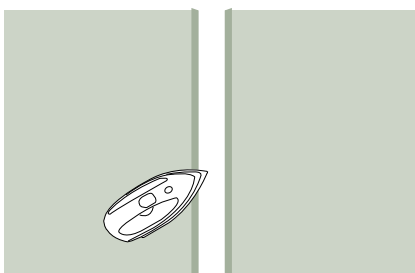


This is called a 'single turned' hem.

On sheer or delicate fabrics a hand sewn hem may be required.

### 3 Hem your back sections.

Turn up and press over 1 cm onto the wrong sides of one the longest two edges of each of your two back panels.

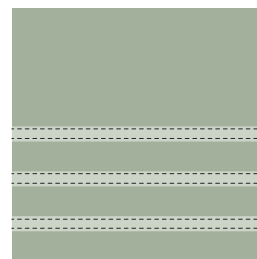


Then press up a 4cm hem, again onto the wrong side of your back panels.

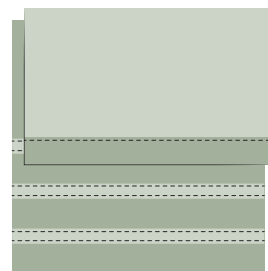


### 4 Assemble your cushion.

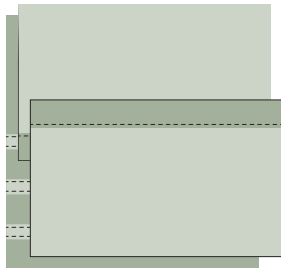
Lay down the front part of your cushion with the right side facing up.



Lay one of your back sections on top of the front part with the right sides together, and the hem in the middle.



Lay the second back section over the first again with the hem towards the middle, again with the right sides together.



## Tip

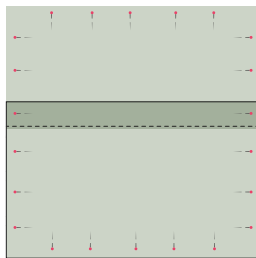
The overlap can be up to a quarter of the finished cushion width, but should be no less than 4 cm for a small cushion. This is a style choice. We have used a 4.5 cm overlap as an example.

For more handy tips and tricks, as well as our class schedule, visit:

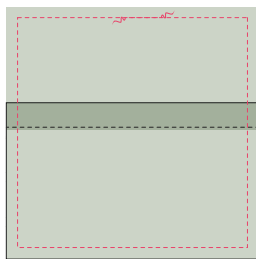
[www.thethriftystitcher.co.uk](http://www.thethriftystitcher.co.uk)

### 6 Stitch your cushion together.

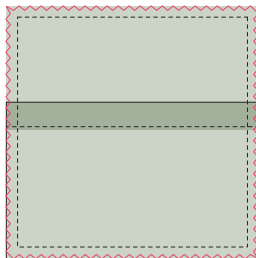
Pin around all four edges.



Machine together with a 1.5cm seam.



Finish the edges with a zigzag.



Turn your new cushion through to the right side, taking care to make sure the corners are square.

