

1

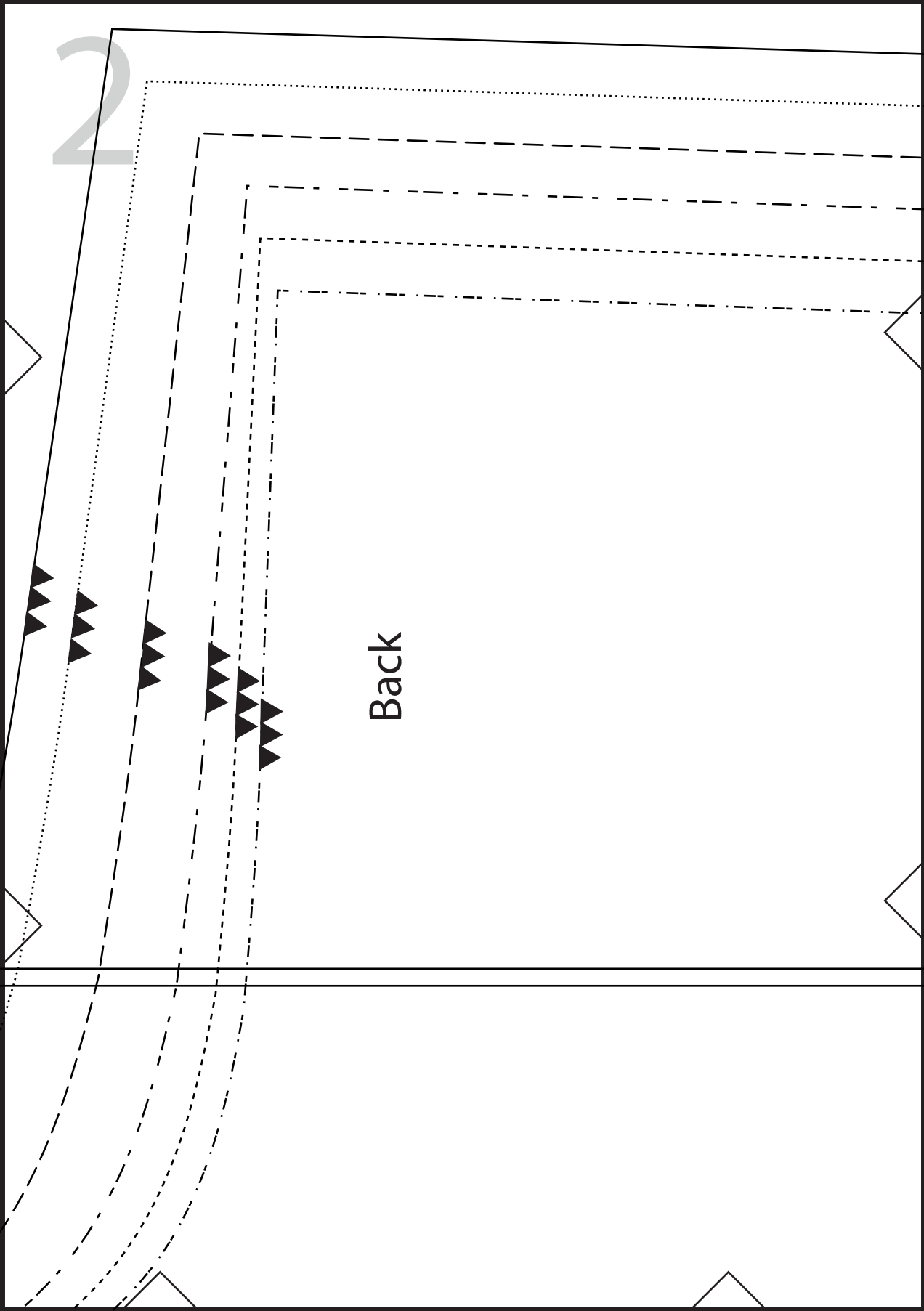
Test Square

Use me to test your printer settings -
I should measure 10cm (3 15/16in) square.
Be sure to print at 100%, no scaling!

Size Key

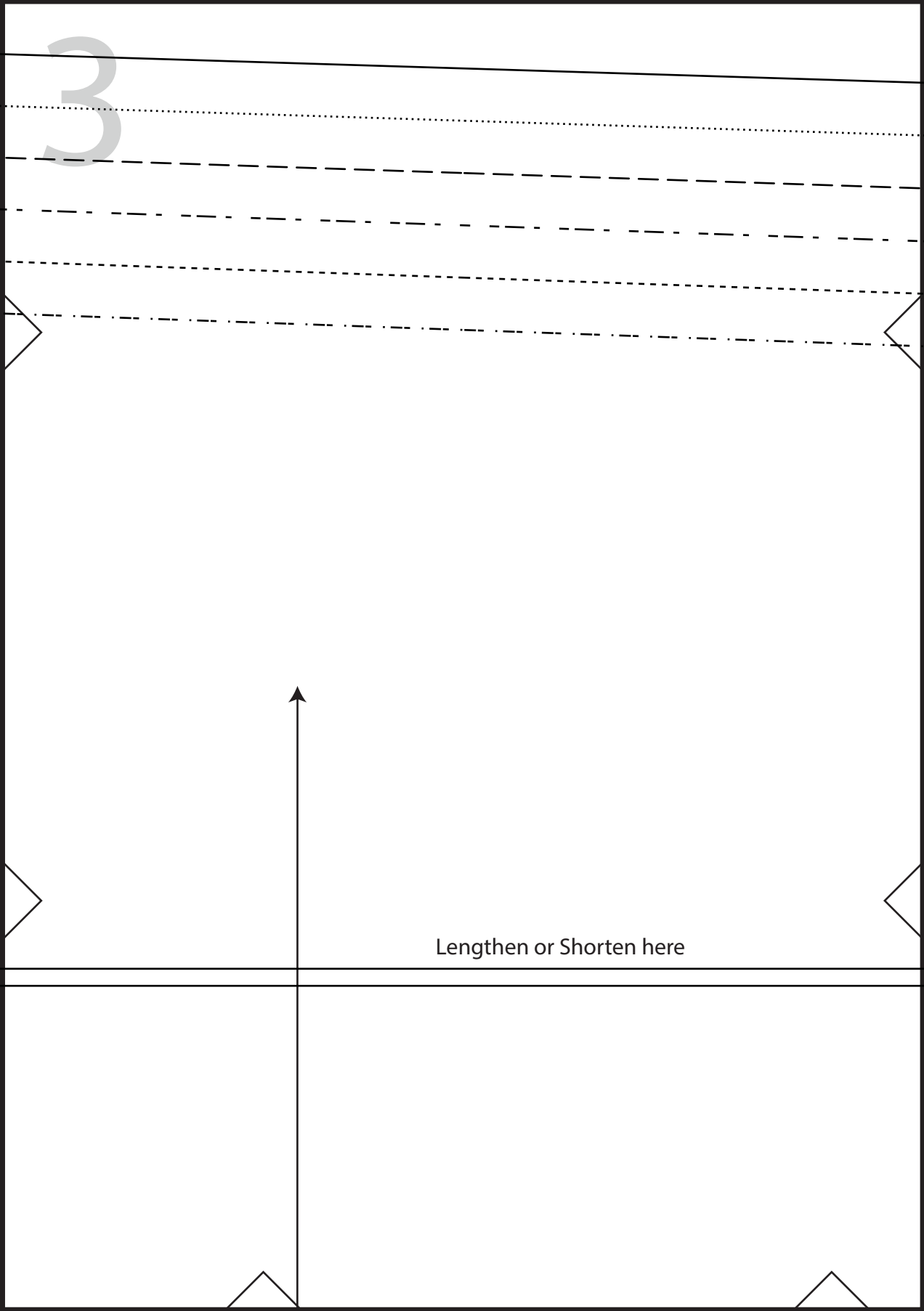
| | |
|----|-----------|
| 6 | ----- |
| 7 | ----- |
| 8 | - - - - - |
| 10 | ----- |
| 12 | |
| 14 | ————— |

2



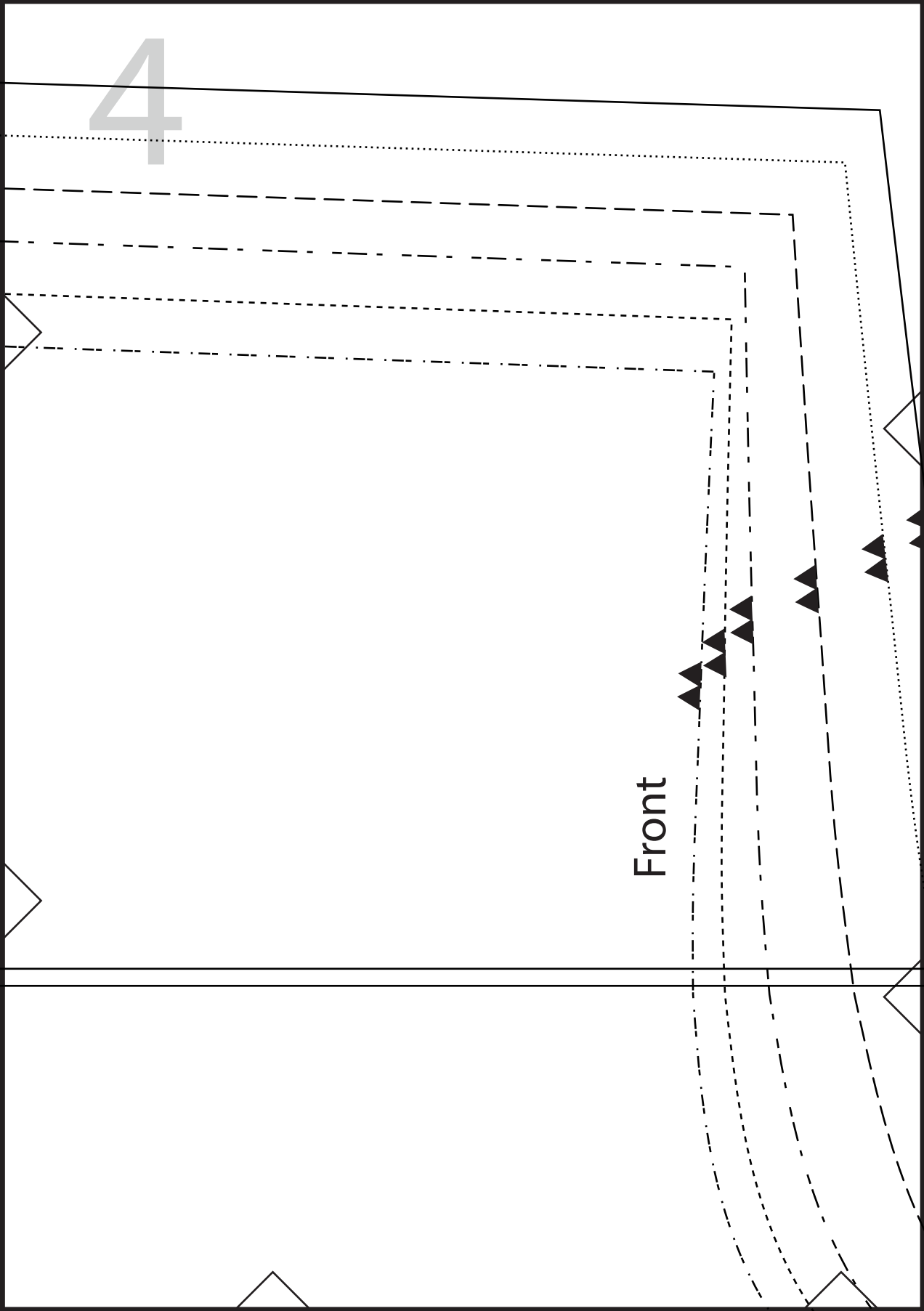
Back

3



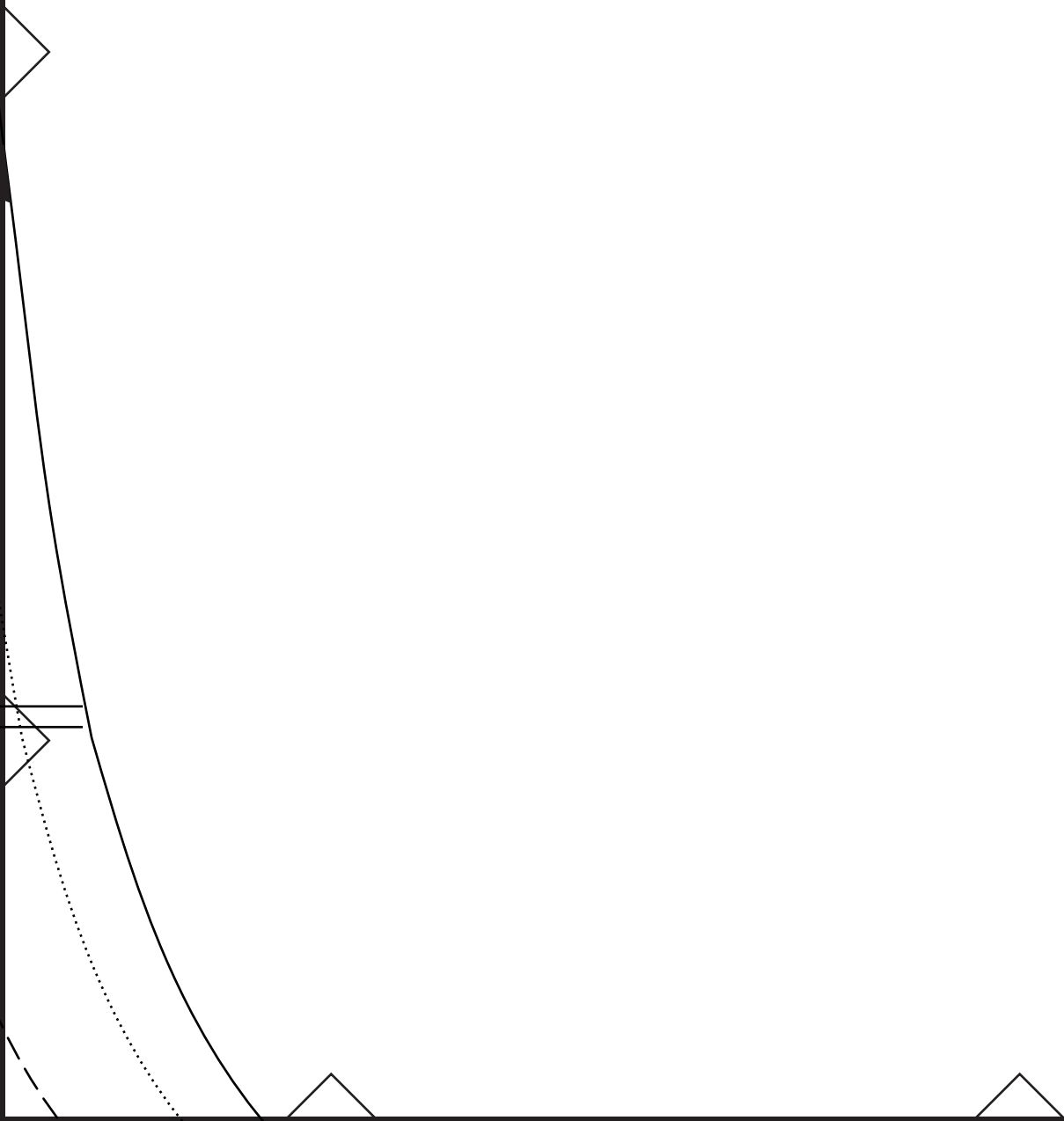
Lengthen or Shorten here

4

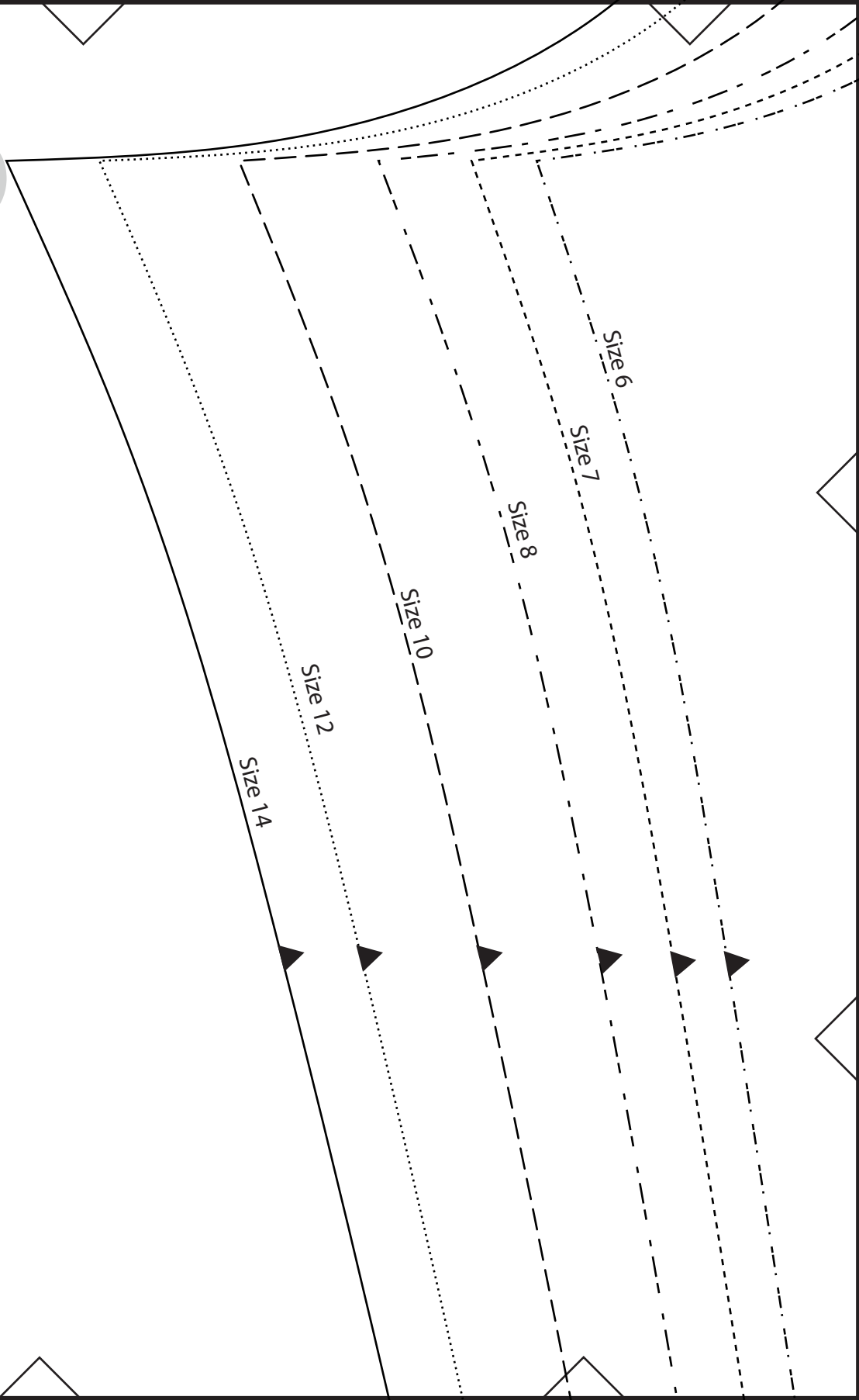


Front

5



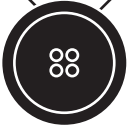
6



7

8

Grainline



THE
Thrifty St

CLAIRE-LOUISE HARDY
LEARN TO SEW WITH

Kids Pyjama
Front & Back

Cut 2

1.5cm (5/8in) seam allowance

2.5cm (1in) hem allowance

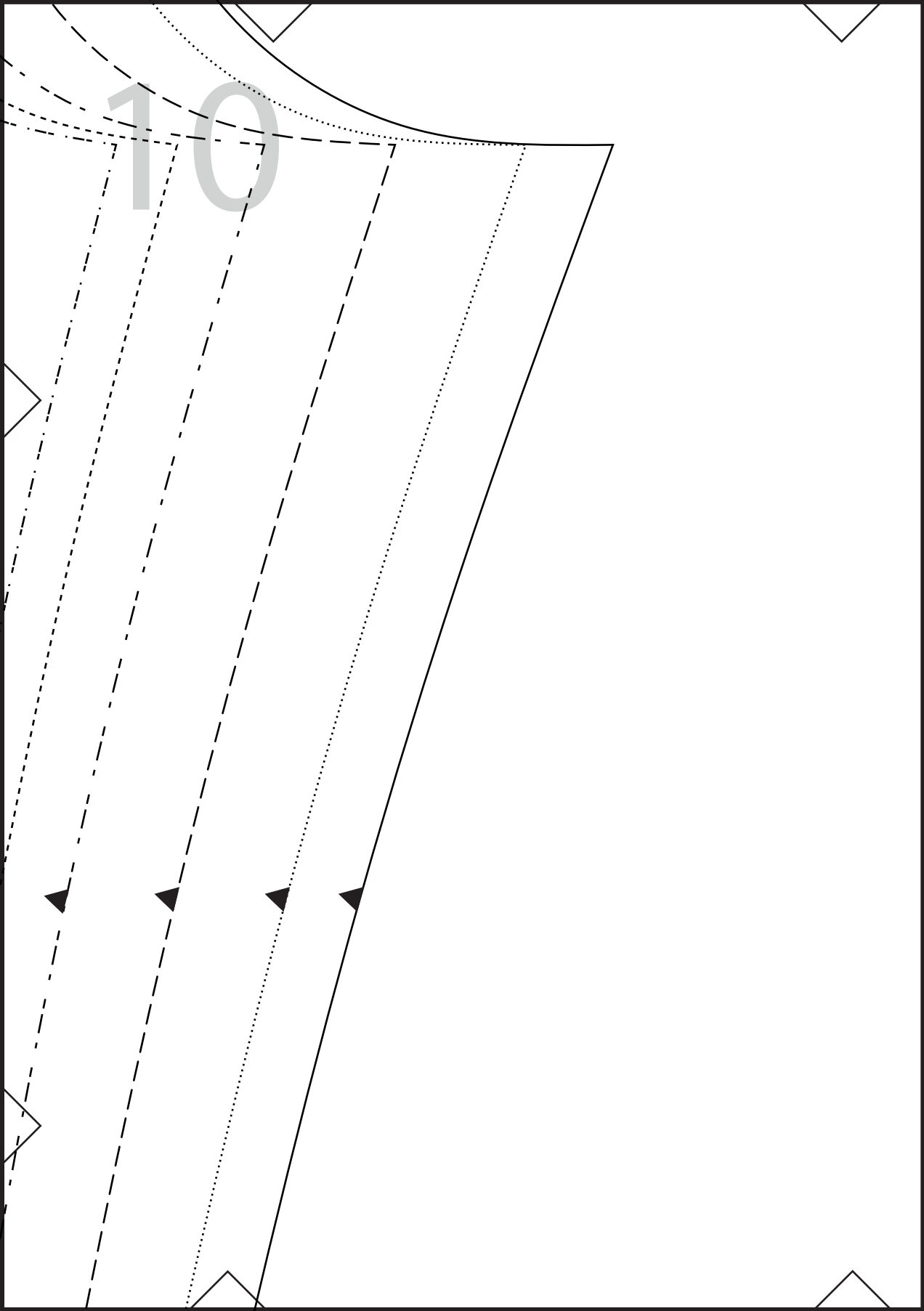
9
Stitcher

A PRO

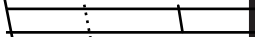
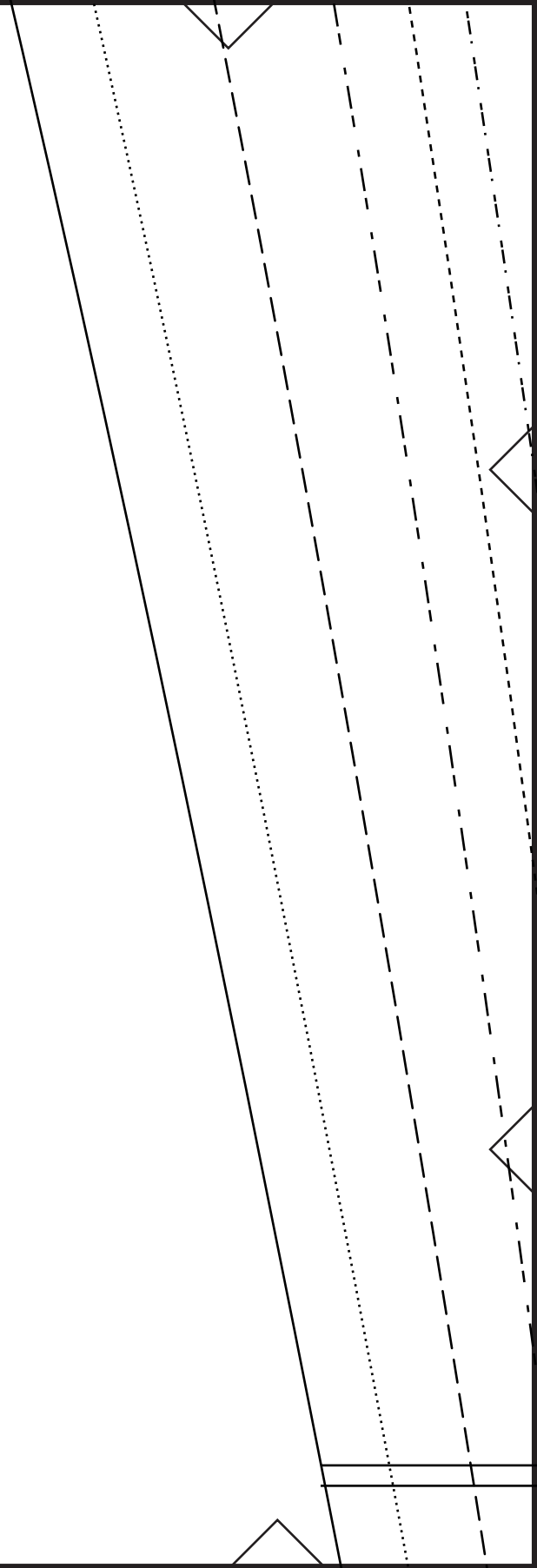
mas
Rack

nce included
ce included

10



11



12



13



Lengthen or Shorten here

14

Size 6

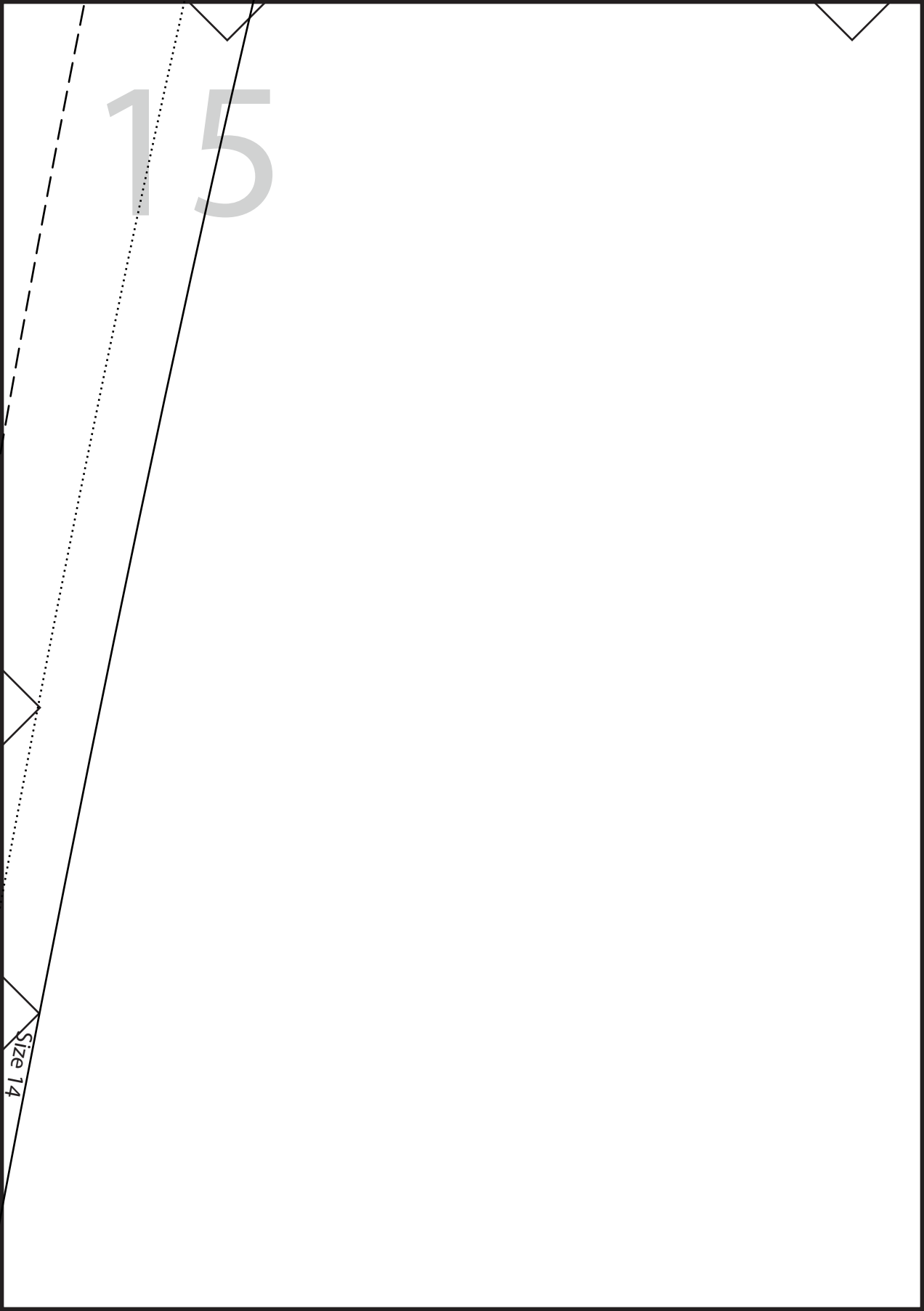
Size 7

Size 8

Size 10

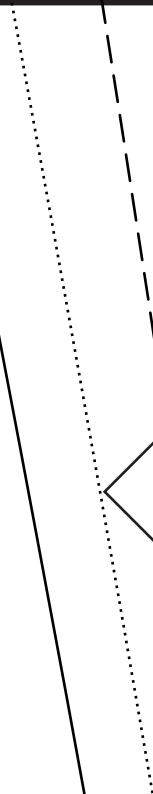
Size 12

15

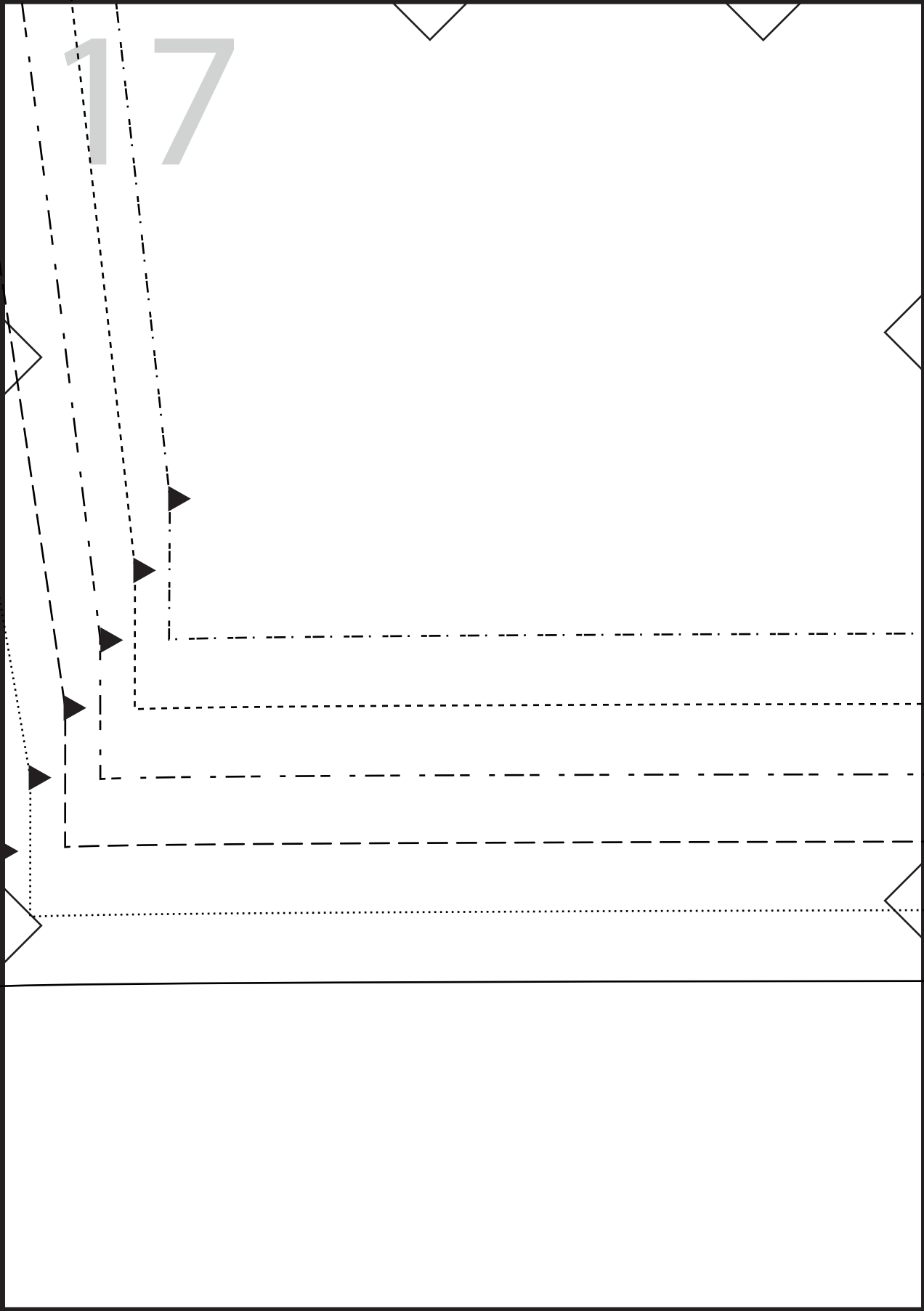


Size 14

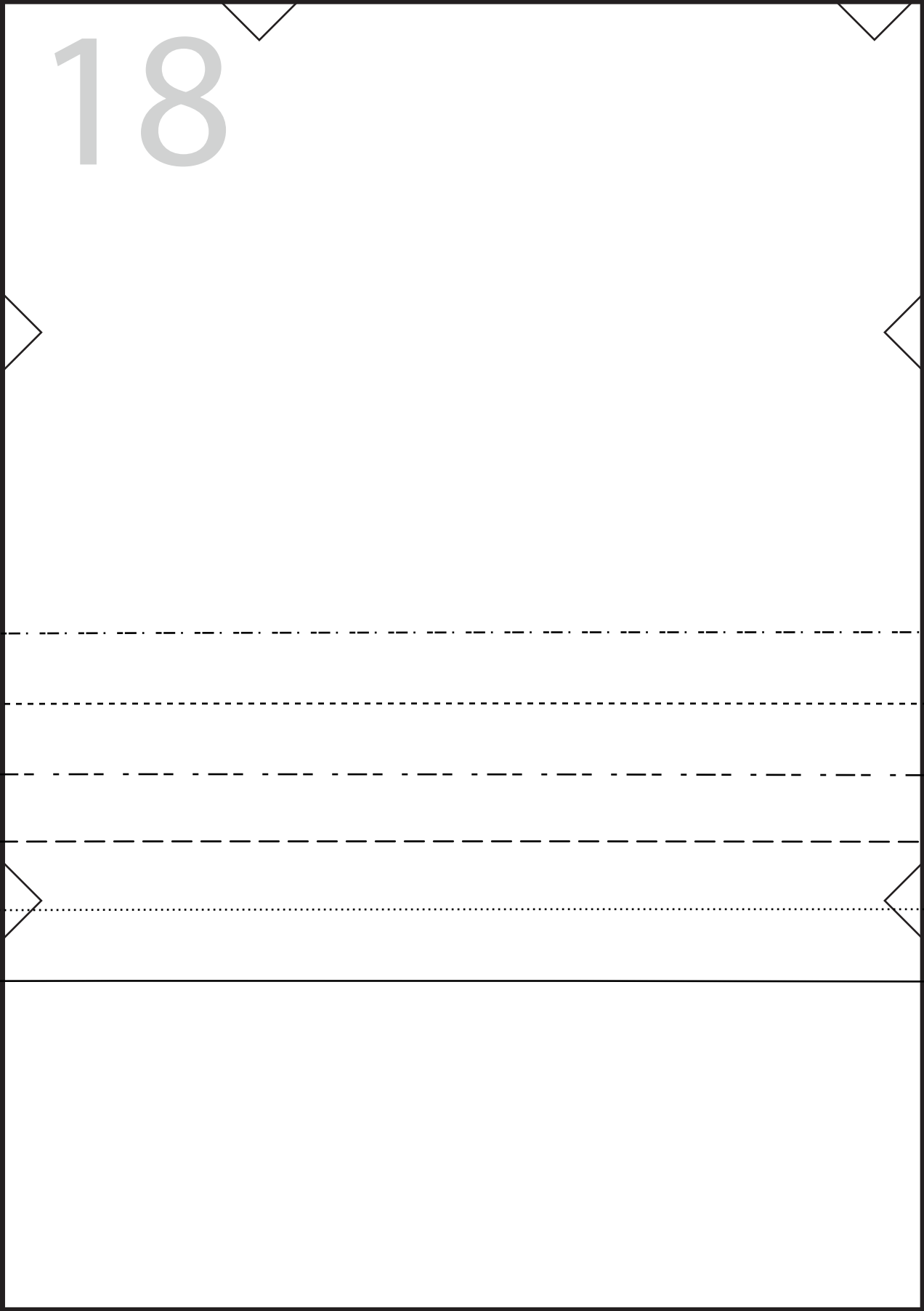
16



17



18



19

